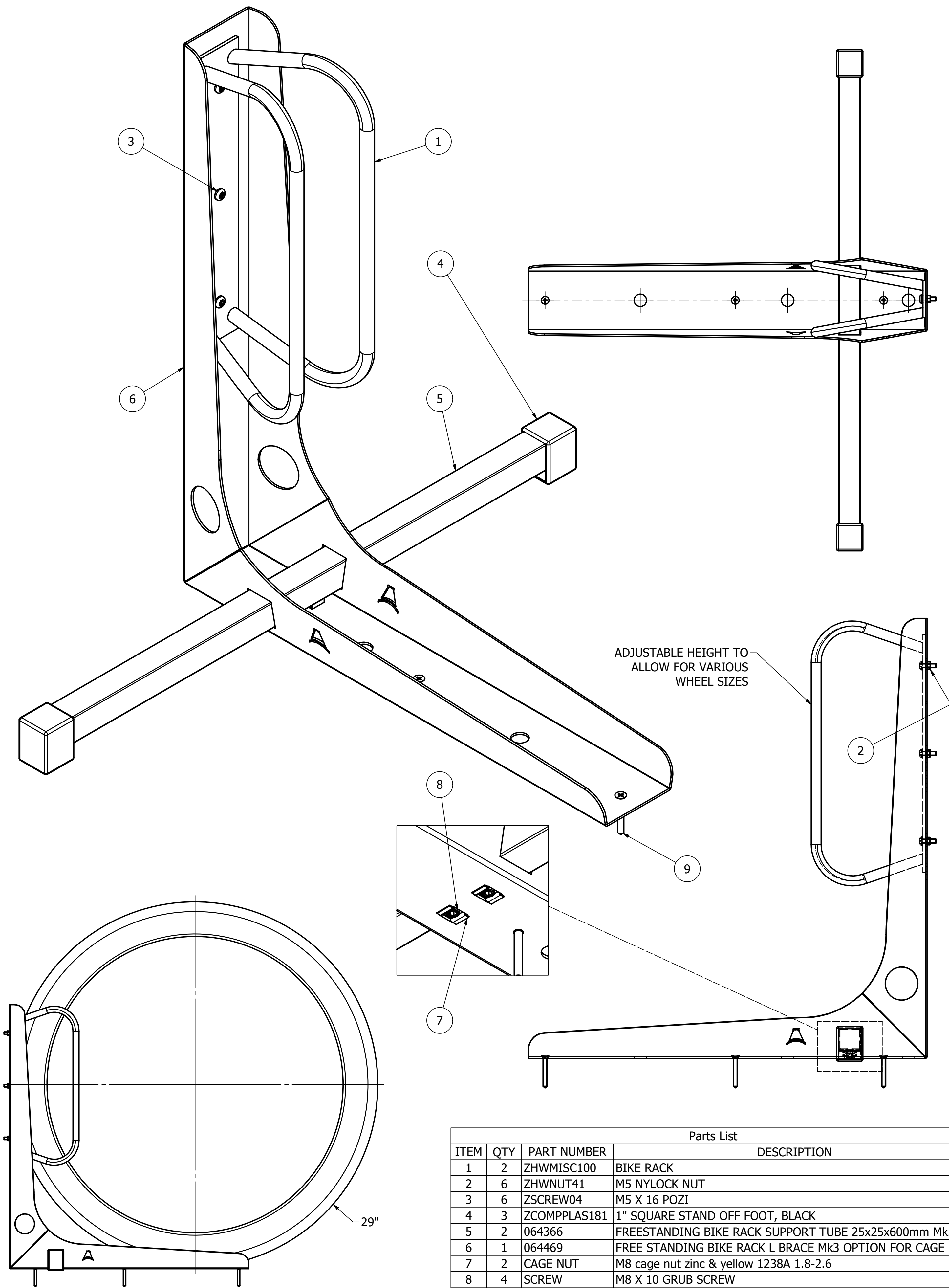


# ASGCYCLESTANDAPT

## FREESTANDING ADJUSTABLE BIKE RACK

TITLE	FREE STANDING BIKE RACK
CONTACT	ENGINEERING
REF	SPT24022

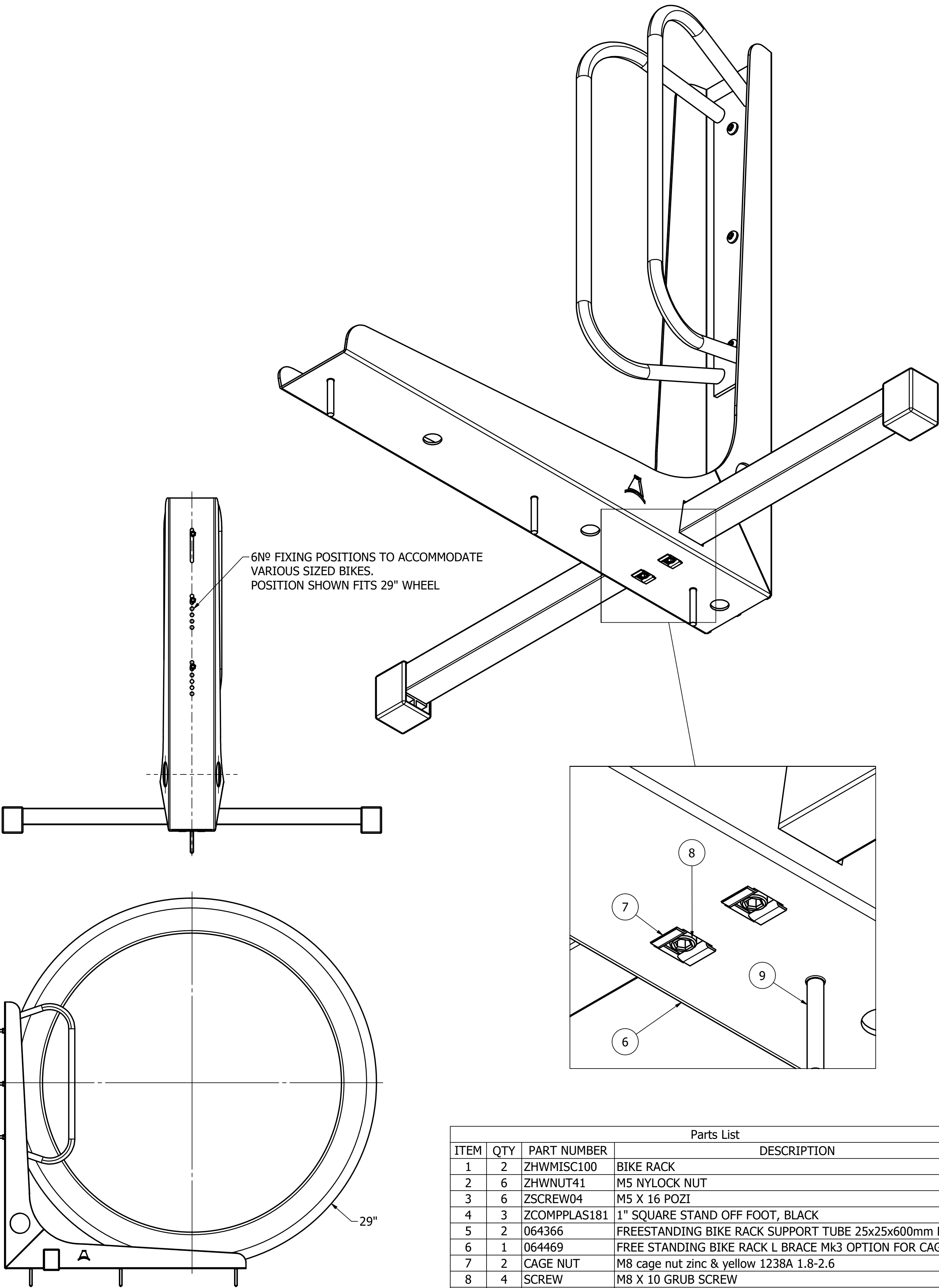


Parts List			
ITEM	QTY	PART NUMBER	DESCRIPTION
1	2	ZHWMISC100	BIKE RACK
2	6	ZHWNUT41	M5 NYLOCK NUT
3	6	ZSCREW04	M5 X 16 POZI
4	3	ZCOMPPLAS181	1" SQUARE STAND OFF FOOT, BLACK
5	2	064366	FREESTANDING BIKE RACK SUPPORT TUBE 25x25x600mm Mk3
6	1	064469	FREE STANDING BIKE RACK L BRACE Mk3 OPTION FOR CAGE NUT
7	2	CAGE NUT	M8 cage nut zinc & yellow 1238A 1.8-2.6
8	4	SCREW	M8 X 10 GRUB SCREW
9	6	ZSCREW222	No8 x 1.5lg X POSI W-SCREW BZP

# ASGCYCLESTANDAPT

## FREESTANDING ADJUSTABLE BIKE RACK

TITLE	FREE STANDING BIKE RACK
CONTACT	ENGINEERING
REF	SPT24022



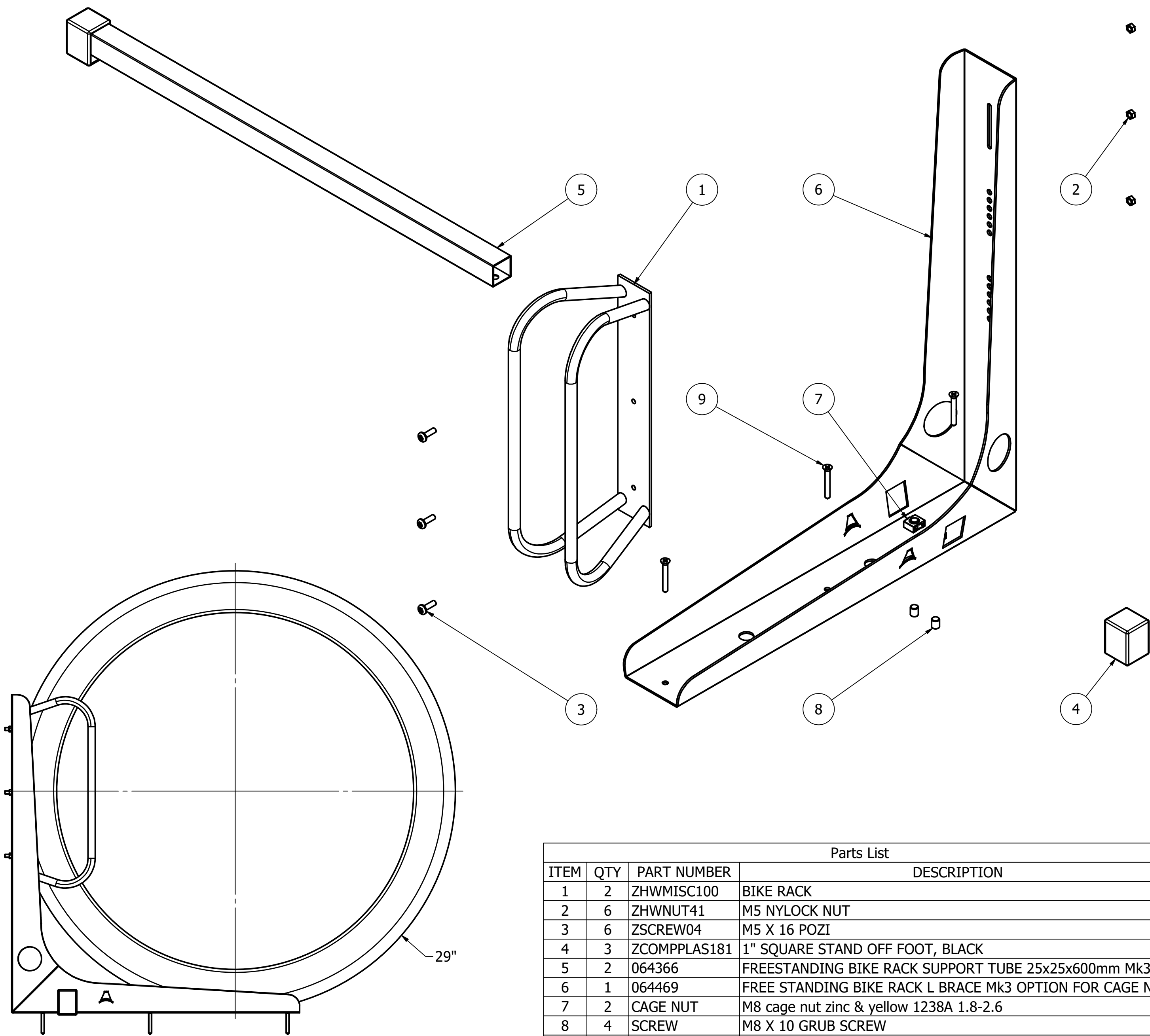
Parts List			
ITEM	QTY	PART NUMBER	DESCRIPTION
1	2	ZHWMISC100	BIKE RACK
2	6	ZHWNUT41	M5 NYLOCK NUT
3	6	ZSCREW04	M5 X 16 POZI
4	3	ZCOMPPLAS181	1" SQUARE STAND OFF FOOT, BLACK
5	2	064366	FREESTANDING BIKE RACK SUPPORT TUBE 25x25x600mm Mk3
6	1	064469	FREE STANDING BIKE RACK L BRACE Mk3 OPTION FOR CAGE NUT
7	2	CAGE NUT	M8 cage nut zinc & yellow 1238A 1.8-2.6
8	4	SCREW	M8 X 10 GRUB SCREW
9	6	ZSCREW222	No8 x 1.5lg X POSI W-SCREW BZP

# ASGCYCLESTANDAPT

## FREESTANDING ADJUSTABLE BIKE RACK

TITLE	FREE STANDING BIKE RACK
CONTACT	ENGINEERING
REF	SPT24022

- FIRST, SECURE THE BIKE RACK ZHWMISC100 TO THE 'L' BRACE 064336 USING THREE ZSCREW04 & THREE ZHWNUT41
- THEN, BY HAND PUSH ONE STAND OFF FOOT ZCOMPPLAS181 ON TO THE SUPPORT TUBE 064366
- SLIDE THE SUPPORT TUBE 064366 THROUGH THE 'L' BRACE 064336
- PUSH THE SECOND FOOT ZCOMPPLAS181 ON THE SUPPORT TUBE
- TURN THE ASSEMBLED STAND UPSIDE DOWN, CENTRE THE SUPPORT TUBE WITHIN THE 'L' BRACE AND SECURE USING 2Nº GRUB SCREWS
- OPTIONAL - FASTEN THE STAND TO THE FLOOR USING 3Nº ZSCREW222



Parts List			
ITEM	QTY	PART NUMBER	DESCRIPTION
1	2	ZHWMISC100	BIKE RACK
2	6	ZHWNUT41	M5 NYLOCK NUT
3	6	ZSCREW04	M5 X 16 POZI
4	3	ZCOMPPLAS181	1" SQUARE STAND OFF FOOT, BLACK
5	2	064366	FREESTANDING BIKE RACK SUPPORT TUBE 25x25x600mm Mk3
6	1	064469	FREE STANDING BIKE RACK L BRACE Mk3 OPTION FOR CAGE NUT
7	2	CAGE NUT	M8 cage nut zinc & yellow 1238A 1.8-2.6
8	4	SCREW	M8 X 10 GRUB SCREW
9	6	ZSCREW222	No8 x 1.5lg X POSI W-SCREW BZP